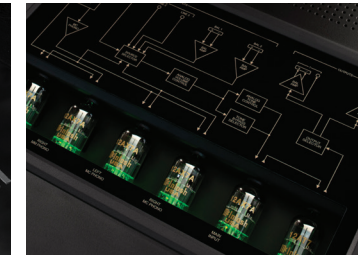
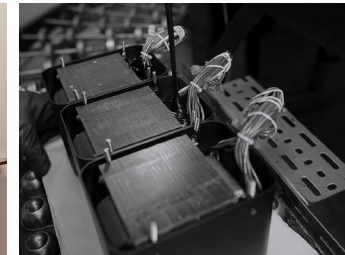


C22 tube preamplifier

- This is the newest version of our C22 Vacuum Tube Preamplifier – the Mk V. It is the latest McIntosh vacuum tube preamplifier to carry the cherished C22 model number.
- It's a direct replacement to our C70 Limited Edition 70th Anniversary Vacuum Tube Preamplifier. It has all the performance of the acclaimed C70 but with the hallowed C22 moniker and its signature glass and aluminum front panel design.
- Features (1) 12AT7 and (5) 12AX7A vacuum tubes that are visible through a glass panel on the top cover.
- Inputs consist of two balanced and three unbalanced inputs, one Moving Coil and one Moving Magnet phono inputs. There are two pairs each of balanced and unbalanced outputs.
- Includes adjustable bass and treble tone controls, plus adjustable Impedance and capacitance for the phono inputs. All control operations are done via knobs and rocker switches. Modern LED indicators denote input selection and volume level.
- Our High Drive headphone amplifier is included and features our Headphone Crossfeed Director (HXD®) technology.
- Power Control can automatically turn other connected McIntosh components on and off.
- With its retro black glass and aluminum front panel design, the C22 Mk V will fit right in with McIntosh home audio systems of any era – from the 1950s to current day.



The Newest Take on a Classic.

McIntosh®

LEGENDARY PERFORMANCE®

www.mcintoshlabs.com

C22 tube preamplifier

Frequency Response:

+0, -0.5dB from 20Hz to 20kHz
+0, -3dB from 15Hz to 100kHz

Total Harmonic Distortion:

0.08% Maximum from 20Hz to 20kHz

Inputs:

3 Unbalanced
2 Balanced
1 Moving Coil (adjustable)
1 Moving Magnet (adjustable)

Outputs:

2 Unbalanced
2 Balanced

Maximum Output Voltage:

Balanced: 16 Vrms
Unbalanced: 8 Vrms

Tone Controls:

Bass and Treble (adjustable)

Overall Dimensions (W x H x D):

17-1/2" (44.45cm) x 6" (15.24cm) x
18" (45.72cm)

Weight:

25 lbs (11.3kg) net,
41.4 lbs (18.8kg) in shipping carton

For the Consumer's Protection:

In order to ensure the highest level of customer satisfaction, new McIntosh products may only be purchased from an Authorized McIntosh Dealer; and, with certain limited exceptions may only be purchased over-the-counter or delivered and installed by the Authorized McIntosh Dealer. McIntosh does not warrant, in any way, products that are purchased from anyone who is not an Authorized McIntosh Dealer, or that have had their serial numbers altered or defaced.



Companion Products

The MC1502 or MC275 Vacuum Tube Amplifier, MT10 Precision Turntable, MCD600 SACD/CD Player, MS500 Music Streamer, MEN220 Room Correction System, MPC1500 Power Controller and XRT1.1K Loudspeakers are logical companions for the C22 Preamplifier. Your Authorized Dealer can provide additional information on other McIntosh product combinations. To learn more, please call us at 1.800.538.6576.

McIntosh®

LEGENDARY PERFORMANCE®

www.mcintoshlabs.com