



HANA-ML

HANA-SL cartridge is now even stepped forward to HANA-ML cartridge for next generation with more perspective sound world.

Body is made by Delrin rigid plastic material, with much more improved mechanical characteristic and stability, having suppressed unnecessary resonance.

Stylus is Micro Line tip, fitting more precisely to vinyl groove to capture extreme tiny vibration signal for extensive wide frequency reproduction.

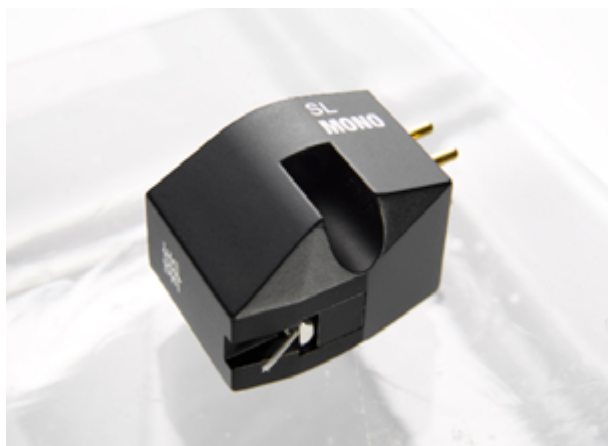
Cryogenic processed (Treated for stabilized uniform particle direction) front, center and rear components of magnetic electro-motive circuit, will get you pure and precise sound response.

Excellent copper wire is selected for moving coil, getting clear sound, thanks to its low distortion rate



HANA-SL MONO

Keeping HANA-SL wonderful sound, HANA-MONO cartridge is now available with twin coils, picking up MONO vinyl signal by Shibata stylus, creating new world sound from traditional days.



TECHNOLOGYFACTORY

Emiel Banningstraat 5
B-2000 Antwerpen (Zuid)
Belgium

Tel.: +32(0)3 216 39 34
Fax: +32(0)3 216 39 33

info@technologyfactory.com
www.technologyfactory.com

EXCEL SOUND™

Manufactured by **Excel Sound Corporation.**

3-7-37, Shin-Yoshida-Higashi, Kohoku-ku Yokohama, Kanagawa, Japan 223-0058
www.excelsound.jp/

Youtek.jp

Exported by **Youtek Limited**

Mail : ishihara@pc4.so-net.ne.jp <http://www.youtek.jp/>