





Creating Cable Royalty

**What do you do when you already make the World's best audio cables?
Taking the next step means trying harder – much harder...**

Siltech's unique mono-crystal silver conductors already deliver the highest resolution, lowest loss audio signal path. But alongside new levels of musical nuance, detail and definition, their astonishing accuracy also reveals the shortcomings in other aspects of cable construction, residual levels of micro-distortion and other error mechanisms that have been masked until now. Using the latest advances in audio measurement techniques, it became clear that to eliminate all distortion and minimize all induced errors would require the mechanical and electrical optimization of the signal transmission path as a whole, including not just the cable but the connectors as well. It would require a completely new construction, new levels of geometrical and conductive consistency. It would demand a complete rethink...

The result is Triple Crown – a cable with a revolutionary new construction and revolutionary new connectors that heralds a revolution in the musical accuracy of audio cables.



Real world solutions for out of this world performance

Cable performance isn't just about technical parameters and LCR values measured in the lab – because most audio cables aren't used in labs. What Siltech's exhaustive empirical research has revealed is that it's not just low LCR numbers that matter, but the consistency with which a cable delivers those numbers under real-world conditions. In many ways, that is no surprise, given the proven benefits of conductor quality, consistency and spaced shield construction. What is a surprise is just how critical it can be – and how it throws development emphasis onto mechanical and electrical stability.

But first, what's better than mono-crystal silver?

Our mono-crystal silver conductors already set the standard against which all other conductors are measured. How could we improve on them? Well, if mono-crystal silver is the best conductor material available, one way to get better performance is to use more of it, creating dimensionally optimized conductors that use more of this costly material. The Triple Crown's conductors are the largest diameter mono-crystal silver conductors we've ever used, a solution that's only possible in a genuinely cost-no-object design, where the only consideration is ultimate performance.





Insulation – the conductor's not so passive partner

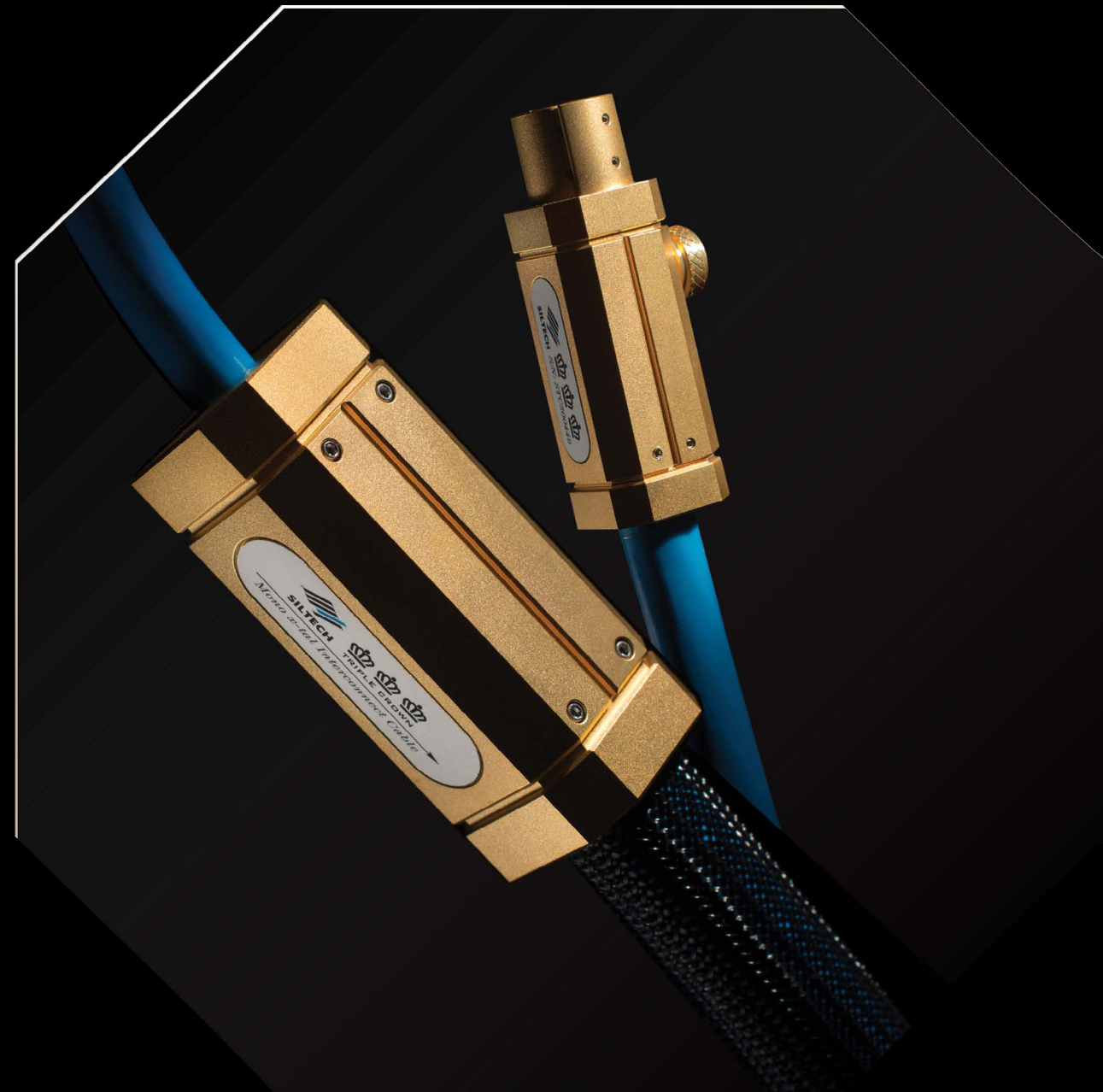
We know how effective the widely spaced screens used in our Double Crown cables are when it comes to protecting the fragile audio signal. We also know how much damage, soft, lossy insulation materials can do. That means that the best audio performance will come from a cable that is large diameter and stiff – almost like a length of pipe!

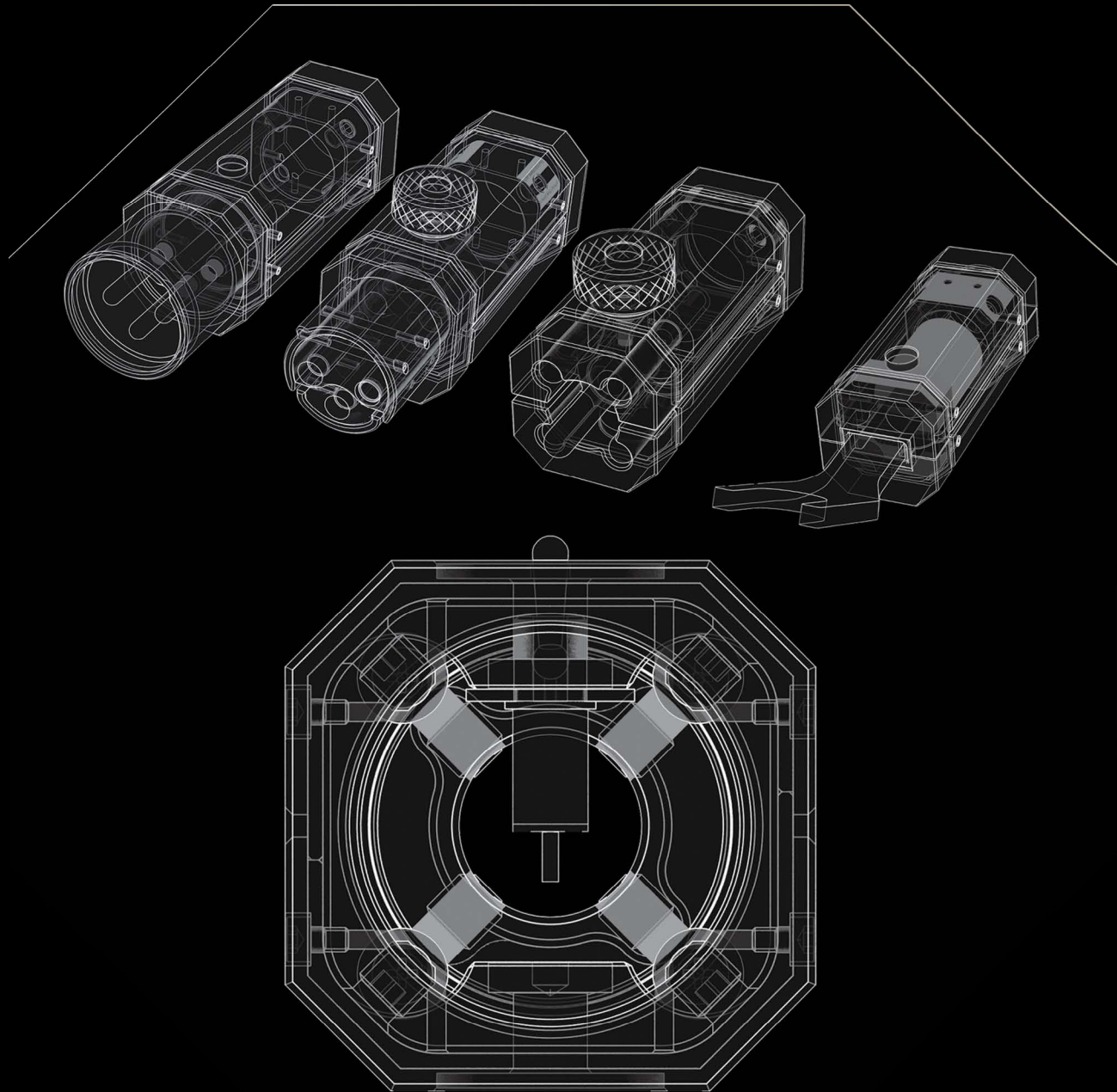
The challenge seems impossible: to create a large diameter cable that is also rigid yet practical, structurally stable yet flexible.

Siltech's engineers have finally perfected a radical new cable topology, a complex construction that ensures absolute geometrical and mechanical consistency, no matter how the cable is curved.

It needed to be longitudinally flexible but stiff in compression.

Designing it was a challenge, but nothing prepared us for the difficulty of actually producing it. Two years later, it is finally ready for launch, delivering results that far exceed even our expectations. We call the new topology Air Cradle Construction and it combines massive mono-crystal silver conductors with ultra low-density insulation created from a complex Teflon matrix, to deliver incredibly low inductance, resistance and capacitance. The result is a vanishingly low loss cable with numbers that aren't just better than any other cable we've ever produced – they're better under any circumstances.





Making Consistent Connections...

Because contact, materials and construction all matter

Passing signal through cable is one thing – passing it through connectors is quite another. Such is the superiority of the new Siltech cable that it ruthlessly exposes the limitations and inconsistency of existing plugs, making it necessary to design completely new terminations, connectors that share the same design goals of mechanical and electrical consistency and stability as the Triple Crown cables. Not surprisingly, the new Triple Crown connectors are just as radical as the cable they match.

With three patents pending, their solid mono-crystal silver contacts provide perfect material continuity through the cable and connector, while the revolutionary two-part asymmetrical design of both the XLR and RCA self-centres and mechanically clamps the contacts, ensuring a geometrical and electrically consistent connection, no matter the size or tolerance of the socket. Despite their size the new connectors are also incredibly low-mass - a result of the intricate construction and watch-like precision.

That should come as no surprise: only a watch-maker was able to achieve the tolerances we demanded.

Superior shielding and easier handling

The large break-out bodies at each end of the cable are for more than mere decoration. Each one has a switch on it that allows you to lift the shield connection, allowing you to choose between directional or star grounding of each channel's shields – or no shield grounding at all – depending on the system and environmental situation. It's another small but surprisingly important step in the pursuit of ultimate system optimization.

Each plug also allows the connector to turn through 90 degrees (so 180 degrees per cable). The Triple Crown cables are necessarily bulky and stiff. We made them as flexible as possible, but we couldn't make them bend any more easily without compromising the sound. Pose-able connectors aren't just an aid to installation – they're what makes it possible.





The King Isn't Dead...

Setting a brand new benchmark

When we embarked on the journey that created Triple Crown, we little realized how long that journey would take or just how far it would take us. Was it all worth it? No one number tells the whole story but consider this – at 18pF/m, the Triple Crown cable has around one-fifth the capacitance of our already outstanding Double Crown. That means it has around one-fifth of the capacitance of the next best sounding cable that there is. That's not an incremental improvement, it's a huge breakthrough – and Triple Crown enjoys a similar margin of superiority in each and every performance parameter, those that are known and recognized by high-school physics and those that are only revealed by the most sensitive instruments and measurement apparatus that man can build.

But it is the most sensitive measurement tool of all, the human ear that reveals the truth of the Triple Crown's performance. No other cable measures as accurately as the Triple Crown and no other cables sounds as musically real. The Double Crown used to set the standard to which other cables aspired. It still does, but now it stands in the shadow of a new champion, and...

... He just got a whole lot better!

Siltech Triple Crown
Because excellence is no accident





www.siltechcables.com

Models and technical specifications are subject to change without prior notice
©2015 International Audio Holding BV / Siltech